



A RESEARCH REVIEW™  
STUDY REVIEW

Making Education Easy

2019

# IMpower150

Atezolizumab for first-line  
treatment of metastatic  
nonsquamous NSCLC

## About the Expert



**Dr Tony Rahman**

Independent expert commentary is provided by Dr Tony Rahman. Tony is a Medical Oncologist at the Canterbury Regional Cancer and Haematology Service. One of his areas of subspecialisation is the care of patients with cancers of the lung. He is also involved in clinical trials of immunotherapy agents in the treatment of lung and genitourinary cancers.

## ABOUT RESEARCH REVIEW

Research Review is an independent medical publishing organisation producing electronic publications in a wide variety of specialist areas. Research Review publications are intended for New Zealand medical professionals.

## SUBSCRIBE AT NO COST TO ANY RESEARCH REVIEW

Health professionals can subscribe to or download previous editions of Research Review publications at [www.researchreview.co.nz](http://www.researchreview.co.nz)

**Privacy Policy:** Research Review will record your email details on a secure database and will not release them to anyone without your prior approval. Research Review and you have the right to inspect, update or delete your details at any time.

**New Zealand Research Review subscribers can claim CPD/CME points** for time spent reading our reviews from a wide range of local medical and nursing colleges. Find out more on our [CPD page](#)



 **RESEARCH REVIEW™**  
Making Education Easy – Since 2006

**Study:** Socinski MA, Jotte RM, Cappuzzo F, et al. Atezolizumab for first-line treatment of metastatic nonsquamous NSCLC. *N Engl J Med.* 2018 Jun 14;378(24):2288-2301.

**Link:** [https://www.nejm.org/doi/10.1056/NEJMoa1716948?url\\_ver=Z39.88-2003&rfr\\_id=ori%3Arid%3Acrossref.org&rfr\\_dat=cr\\_pub%3Dwww.ncbi.nlm.nih.gov](https://www.nejm.org/doi/10.1056/NEJMoa1716948?url_ver=Z39.88-2003&rfr_id=ori%3Arid%3Acrossref.org&rfr_dat=cr_pub%3Dwww.ncbi.nlm.nih.gov)

This review summarises the IMpower150 study, an open-label, phase III trial that evaluated Tecentriq® (atezolizumab) plus bevacizumab plus chemotherapy in patients with metastatic nonsquamous non-small-cell lung cancer (NSCLC) who had not previously received chemotherapy.<sup>1</sup> The study concluded that the addition of atezolizumab to bevacizumab plus chemotherapy significantly improved progression-free survival and overall survival among patients with metastatic nonsquamous NSCLC, regardless of programmed death ligand-1 (PD-L1) expression and *EGFR* or *ALK* genetic alteration status. Atezolizumab is a monoclonal antibody targeting PD-L1.<sup>2</sup> In New Zealand, atezolizumab is indicated (but not funded) for the treatment of adult patients with locally advanced or metastatic NSCLC after prior chemotherapy.<sup>2</sup> It is also indicated (but not funded) for the treatment of extensive-stage small cell lung cancer, urothelial carcinoma, and triple-negative breast cancer.<sup>2</sup> This publication has been commissioned by Roche Products (New Zealand) Limited.

## Background

Lung cancer is the leading cause of cancer-related deaths worldwide<sup>3</sup> and in New Zealand.<sup>4</sup> With the 5-year survival rate in lung cancer patients diagnosed between 2005-2009 at only 10%–20%<sup>5</sup> further necessary advances in the treatment of NSCLC, including immunotherapy, have been made over the last decade. The standard of care for patients with treatment-naïve metastatic NSCLC includes platinum-doublet chemotherapy with or without bevacizumab for patients with non-squamous cancer,<sup>6-8</sup> targeted therapies for patients with oncogenic alterations,<sup>9</sup> anti-PD-1 monotherapy for those with PD-L1 expression on at least 50% of tumour cells,<sup>9</sup> and anti-PD-1 plus platinum-doublet chemotherapy for patients with non-squamous cancer.<sup>10</sup> However, the prognosis remains poor.

## Rationale for combining atezolizumab and bevacizumab

PD-L1 is an immune checkpoint that limits T-cell activity by binding to its receptors programmed death 1 (PD-1) or B7.1 on activated T-cells.<sup>11,12</sup> PD-L1 is widely expressed across a number of malignancies, and blockade of the PD-L1/PD-1 pathway is associated with overall survival benefits in NSCLC, melanoma, and renal cell carcinoma.<sup>13-20</sup>

Atezolizumab is a humanised monoclonal immunoglobulin G1 antibody that binds directly to PD-L1 and prevents its interaction with PD-1 and B7.1.<sup>21</sup> Atezolizumab has been shown to provide an overall survival benefit in patients with previously treated metastatic NSCLC regardless of PD-L1 expression<sup>22</sup> and has shown promising efficacy and an acceptable safety profile when combined with platinum-doublet chemotherapy in chemotherapy-naïve NSCLC.<sup>23</sup>

Second-line or later clinical trials have shown that patients with *EGFR*-mutant NSCLC do not benefit from checkpoint inhibitor therapy.<sup>22,24,25</sup> Thus, treatment options are limited for such patients after failure of tyrosine kinase inhibitor (TKI) therapy or unacceptable side effects.

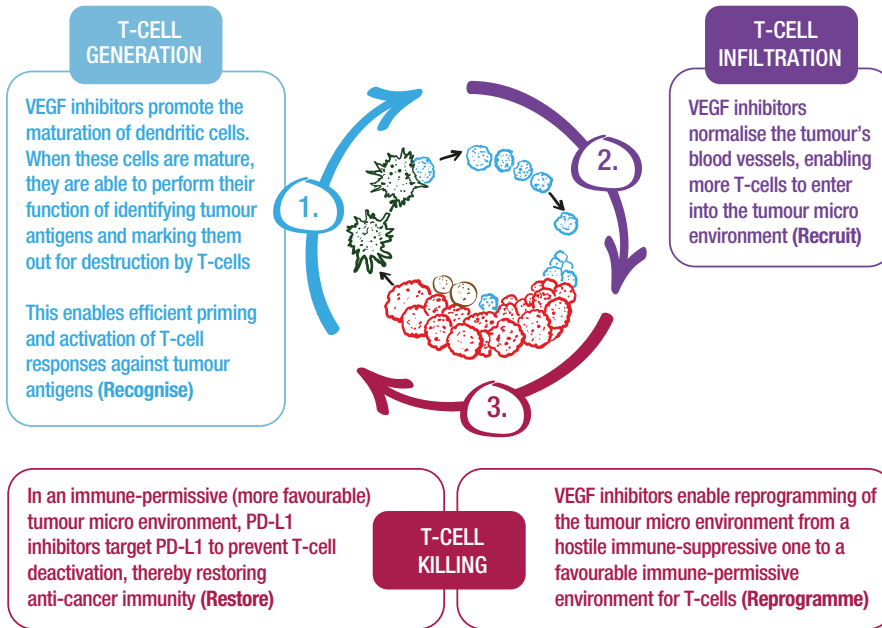
By targeting various stages within the cancer immunity cycle, chemo-immunotherapy combinations aim to create a more favourable environment that maximises the potential of such combinations together with the immune system to treat cancer.

Vascular endothelial growth factor (VEGF) is able to block the antitumour immune response by promoting vascularization, which is often exploited by tumours to stimulate angiogenesis required for tumour growth and metastasis,<sup>26</sup> and interrupting T-cell infiltration into the tumour, which is an important step in the cancer immunity cycle.<sup>27,28</sup>



There is a strong scientific rationale to support the combined use of atezolizumab plus the VEGF inhibitor bevacizumab (Figure 1). In addition to its antiangiogenic effects, bevacizumab may enhance the ability of atezolizumab to restore anti-cancer immunity by inhibiting VEGF-related immunosuppression,<sup>29-36</sup> promoting T-cell infiltration into the tumour microenvironment<sup>28,33</sup> and enabling priming and activation of T-cell responses against tumour antigens.<sup>33</sup> Increased intratumoural T-cells promote an inflamed tumour microenvironment that is optimised for PD-L1 inhibition.<sup>27</sup>

**Figure 1.** The complementary activity of PD-L1 and VEGF inhibitors through the cancer immunity cycle<sup>27,37</sup>



## IMpower150: Methods<sup>1</sup>

IMpower150 was an international, open-label, randomised, phase III study that evaluated the addition of atezolizumab to carboplatin plus paclitaxel with or without bevacizumab.<sup>1</sup> The following patients were eligible for the study: those who had stage IV or recurrent metastatic non-squamous NSCLC and were not treated with chemotherapy, those with a baseline Eastern Cooperative Oncology Group (ECOG) performance status score of 0/1, and those with any PD-L1 immunohistochemistry status. Additionally, patients with *EGFR* or *ALK* genomic alterations were eligible, provided they had received at least one approved TKI and had disease progression or unacceptable side effects. This is in contrast to other

first-line lung immunotherapy trials which have excluded patients with *EGFR* or *ALK* mutations.

Patients received atezolizumab/carboplatin/paclitaxel (ACP) or atezolizumab/bevacizumab/carboplatin/paclitaxel (ABCP) or bevacizumab/carboplatin/paclitaxel (BCP) every 3 weeks for four or six cycles, followed by maintenance therapy with atezolizumab, bevacizumab, or both. In this first report, only the first two arms were analysed, whilst data were not shown for the third. Atezolizumab was administered at a dose of 1200 mg, bevacizumab at a dose of 15 mg/kg, paclitaxel at a dose of 200 mg/m<sup>2</sup>, and carboplatin at an area under the concentration–time curve of 6 mg/mL/min. Continuation of atezolizumab after the occurrence of disease progression was allowed if evidence of clinical benefit existed. No crossover to atezolizumab was permitted.

Co-primary endpoints were investigator-assessed progression-free survival (PFS) in the intention-to-treat (ITT) wild-type (WT) (*EGFR* or *ALK* negative) population and in WT patients with expression of a tumour T-effector gene signature (*Teff*-WT), and overall survival (OS) in the ITT-WT population, for the ABCP versus BCP comparison. The *Teff* gene signature was described as *PD-L1*, *CXCL9*, and *IFN-γ* messenger RNA expression, as assessed using macro-dissected tumour tissue RNA measurements at baseline.

Secondary endpoints included investigator-assessed PFS, and OS in the ITT population, which comprised all enrolled patients, including those with *EGFR* or *ALK* genomic alterations (oncogenic driver mutations). In addition, the following endpoints were evaluated in the WT population: PFS, as assessed at an independent review facility; investigator-assessed PFS in the PD-L1 expression subgroups; and the rate of objective response (complete response or partial response, as assessed by the investigators), as well as the duration of response among the patients who had an objective response; and safety.

## Expert commentary on methods

IMpower150 was a phase III trial asking two important questions:

1. Does an immune checkpoint inhibitor (ICI) (targeting the PD-L1 to PD-1 interaction) combine effectively with chemotherapy to improve outcomes for fit patients with stage IV non-squamous NSCLC?
  2. Does VEGF blockade enhance the efficacy of an immune checkpoint inhibitor in fit patients with stage IV non-squamous NSCLC?
- The trial design randomised patients to three arms, however, planned comparisons as stated in the protocol were to compare ABCP to BCP and ACP to BCP.
  - There did not appear to be a clear plan to compare ABCP to ACP. I would have expected that the addition of bevacizumab to the treatment regimen may or may not improve outcome and may impact on toxicity data. I believe an opportunity has been missed to obtain data pertinent to the use of bevacizumab in this setting.

- The study included lung cancer patients with oncogenic driver mutations after disease progression on a TKI or, in certain countries, if a TKI was not available to the patient.
- There was a protocol amendment during the study which changed the primary analysis populations from the ITT and PD-L1 positive population to patients without driver mutations (WT population) and *Teff* gene signature high. It was stated that emerging data had shown patients with driver mutations did not gain benefit from single agent checkpoint inhibitors in second line compared with chemotherapy alone.
- The study was not stratified to compare outcomes for driver mutation patients compared with WT patients nor outcomes between *Teff* high and *Teff* low patients.
- The study was stratified to compare outcomes with regard to PD-L1 expression, the presence or absence of liver metastases and gender.



## IMpower150: Results

A total of 1202 patients (ITT population) were enrolled. The WT population comprised 1040 of these patients (86.5%). *Teff* gene-signature expression could be evaluated in 95.6% of the patients in the WT population. A total of 445 of the 1040 patients in the WT population (42.8%) had high *Teff* gene-signature expression (*Teff*-high WT population).

### Progression-free survival

Among the WT population, the median PFS was longer in the ABCP group than in the BCP group (8.3 months vs 6.8 months;  $P < 0.001$ ) (Figure 2). At 12 months, the rate of PFS was twice as high in the ABCP group than in the BCP group (36.5% vs 18%) (Figure 2). The corresponding PFS values in the *Teff*-high WT population were 11.3 months and 6.8 months (hazard ratio [HR], 0.51; 95% confidence interval [CI], 0.38–0.68;  $P < 0.001$ ), with 12-month PFS of 46% versus 18%, respectively.

Subgroup analysis showed that PFS among patients with *EGFR* mutations or *ALK* rearrangements increased with ABCP compared to that with BCP (9.7 vs 6.1 months; HR, 0.59; 95% CI, 0.37–0.94). This observed benefit is notable, given that clinical trials of PD-L1 or PD-1 inhibitors as monotherapy after the failure TKI therapy have not shown that such therapies are more effective than standard chemotherapy.<sup>22,24,25</sup> In addition, such patients have limited proven treatment options, and data are scarce from phase III trials examining the effectiveness of platinum-based regimens with or without PD-L1 or PD-1 inhibitors in this patient population.<sup>38</sup>

Prolonged PFS was also observed regardless of PD-L1 status including in the PD-L1–negative subgroup (7.1 months with ABCP vs 6.9 months with BCP; HR, 0.77; 95% CI, 0.61–0.99) and the PD-L1–low subgroup (8.3 months vs 6.6 months; HR, 0.56; 95% CI, 0.41–0.77), as well as in the subgroup of patients with low expression of a *Teff* gene signature (7.3 months vs 7.0 months; HR, 0.76; 95% CI, 0.60–0.96). The benefit of ABCP in patients regardless of PD-L1 status is particularly relevant because the use of PD-1 inhibitors as first-line monotherapy is presently restricted to patients with high PD-L1 expression, and most patients with metastatic NSCLC have tumours with low, negative, or unknown PD-L1 expression.<sup>39</sup>

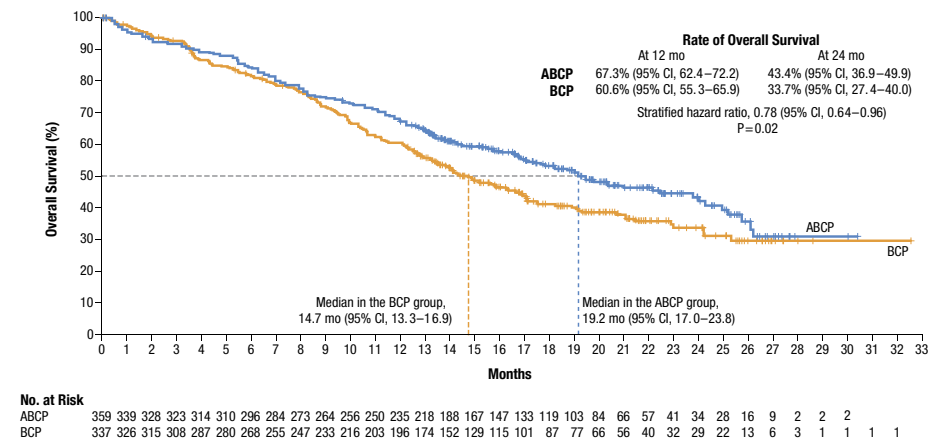
A benefit with respect to PFS was observed with ABCP in key clinical and biomarker subgroups, including patients with liver metastases (7.4 months with ABCP vs 4.9 months with BCP; HR, 0.42; 95% CI, 0.26–0.66). Of note, patients with liver metastases previously had limited therapeutic benefit with checkpoint-inhibitor monotherapy.<sup>40–42</sup>

### Overall survival

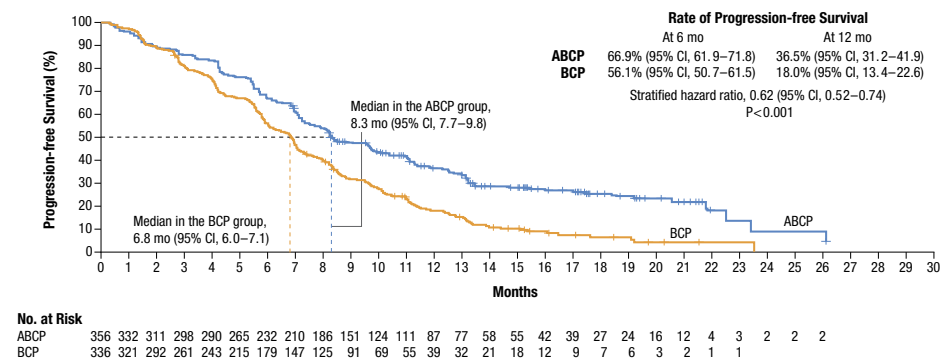
At the time of the interim analysis of OS in the WT population the median duration of follow-up was approximately 20 months. Median OS among the patients in the WT population was significantly longer in the ABCP group than in the BCP group (19.2 months vs 14.7 months; Figure 3).

Further analyses found that the survival advantage of ABCP extended to patients with *EGFR* mutations (median OS not reached vs 18.7 months; HR, 0.61; 95% CI, 0.29–1.28) and those with liver metastases (13.3 months vs 9.4 months; HR, 0.52; 95% CI 0.33–0.82).<sup>43</sup>

**Figure 2.** Interim analysis of overall survival in the ABCP group and the BCP group<sup>1</sup>



**Figure 3.** Investigator-assessed progression-free survival in the ABCP group and the BCP group<sup>1</sup>



### Objective response and duration of response

The investigator-assessed unconfirmed objective response rates in the WT population were 63.5% in the ABCP group and 48.0% in the BCP; 3.7% of the patients in the ABCP group had complete responses, as compared with 1.2% of the patients in the BCP group.<sup>1</sup> The results were similar in the *Teff*-high WT population. In the WT population, the median response durations were 9.0 and 5.7 months in the ABCP and BCP groups, respectively; in the *Teff*-high WT population, these were 11.2 and 5.7 months in the ABCP and BCP groups, respectively.<sup>1</sup>

### Expert commentary on efficacy

- Final analysis data on PFS and interim data on OS was published for the ABCP vs BCP arms. No data was published for the ACP arm.<sup>1</sup>
- IMpower150 showed a significant 1.5-month improvement in median PFS in favour of ABCP in the ITT analysis as well as significant improvement in the PFS rate at 6 (67% vs 56%) and 12 months (36.5% vs 18%) with a stratified HR of 0.62.<sup>1</sup>
- In the WT and *Teff* high WT populations response rates were higher and the median durations of response were longer in the ABCP arm.<sup>1</sup>
- Median OS was 4.5 months longer in the ABCP arm (19.2 months vs 14.7 months) than in the BCP arm in the WT population with a stratified HR of 0.78.<sup>1</sup>
- Other results are as described above, however, the HRs are unstratified.<sup>1</sup>





## Safety

The safety profile of ABCP was consistent with previously reported safety risks of the individual medicines.<sup>1</sup> The most commonly observed grade 3 or 4 treatment-related adverse events were neutropenia (13.7% in the ABCP group vs 11.2% in the BCP group and hypertension (6.4% vs 6.3%, respectively).<sup>1</sup> The incidences of rash, stomatitis, febrile neutropenia, and haemoptysis were higher by <10% among patients in the ABCP group than among those in the BCP group.<sup>1</sup> Deaths from treatment occurred in 11 (2.8%) and 9 (2.3%) patients in the ABCP and BCP groups, respectively.<sup>1</sup> Five deaths in the ABCP group were due to pulmonary haemorrhage or haemoptysis.<sup>1</sup>

The incidence and nature of immune-related adverse events in the ABCP group were similar to those with atezolizumab monotherapy.<sup>1</sup> Overall, 77.4% of the immune-related adverse events observed in the ABCP group were grade 1 or 2, and none were grade 5.<sup>1</sup> The most common immune-related adverse events included rash, hepatitis, hypothyroidism, hyperthyroidism, pneumonitis, and colitis (Table 1).<sup>1</sup> Most adverse events were transient and were limited to the chemotherapy induction phase.<sup>1</sup> The rate of serious adverse events during the chemotherapy-free maintenance treatment was low, a finding that is clinically relevant, given that induction represents a short time (approximately 2.2 months), whereas maintenance treatment can be prolonged.<sup>1</sup>

**Table 1.** Immune-related adverse events by treatment phase in the ABCP group and the BCP group<sup>44</sup>

| Incidence, n (%)                         | Induction phase |           |             |           | Maintenance phase |           |             |           |
|--|-----------------|-----------|-------------|-----------|-------------------|-----------|-------------|-----------|
|  | ABCP (n=393)    |           | BCP (n=394) |           | ABCP (n=312)      |           | BCP (n=270) |           |
|  | All grades      | Grade 3-4 | All grades  | Grade 3-4 | All grades        | Grade 3-4 | All grades  | Grade 3-4 |
| Immune-related AEs, n (%)                | 131 (33.3)      | 30 (7.6)  | 85 (21.6)   | 12 (3.0)  | 116 (37.2)        | 20 (6.4)  | 35 (13.0)   | 1 (0.4)   |
| Immune-related AEs in ≥5 patients, n (%) |                 |           |             |           |                   |           |             |           |
| Rash                                     | 81 (20.6)       | 9 (2.3)   | 46 (11.7)   | 2 (0.5)   | 48 (15.4)         | 0         | 9 (3.3)     | 0         |
| Hepatitis lab abnormalities              | 31 (7.9)        | 12 (3.1)  | 17 (4.3)    | 3 (0.8)   | 27 (8.7)          | 8 (2.6)   | 14 (5.2)    | 0         |
| Hypothyroidism                           | 17 (4.3)        | 1 (0.3)   | 10 (2.5)    | 0         | 41 (13.1)         | 0         | 8 (3.0)     | 0         |
| Pneumonitis                              | 6 (1.5)         | 3 (0.8)   | 4 (1.0)     | 1 (0.3)   | 6 (1.9)           | 2 (0.6)   | 1 (0.4)     | 1 (0.4)   |
| Hyperthyroidism                          | 8 (2.0)         | 1 (0.3)   | 2 (0.5)     | 0         | 9 (2.9)           | 0         | 3 (1.1)     | 0         |
| Colitis                                  | 4 (1.0)         | 1 (0.3)   | 2 (0.5)     | 2 (0.5)   | 6 (1.9)           | 5 (1.6)   | 0           | 0         |

## Expert commentary on safety

- Safety data is consistent with previous immunotherapy trials with regard to immune-related adverse events.<sup>1</sup>
- Four deaths from pulmonary haemorrhage/haemoptysis in the ABCP cohort were associated with high risk features (e.g. cavitation, tumour necrosis and infiltration of the great vessels).<sup>1</sup>
- The use of bevacizumab in patients with these high risk features should be carefully considered.

## TAKE HOME MESSAGES

- IMpower150 demonstrated significantly improved PFS and OS with the addition of atezolizumab to the regimen of bevacizumab plus chemotherapy as a first-line treatment for non-squamous metastatic NSCLC.<sup>1</sup>
- PFS was longer in the ABCP group than in the BCP group (8.3 months vs 6.8 months).<sup>1</sup>
- The rate of PFS at 12 months was twice as high with ABCP as with BCP (36.5% vs 18.0%).<sup>1</sup>
- OS was longer in the ABCP group than in the BCP group (19.2 months vs 14.7 months).<sup>1</sup>
- The rate of objective response was higher with ABCP than with BCP (63.5% vs 48.0%).<sup>1</sup>
- Regardless of the expression of PD-L1 or the presence of a T-effector gene signature, the combination therapy proved beneficial.<sup>1</sup>
- The clinical benefits were observed in key subgroups of patients with *EGFR* and *ALK* genomic alterations and liver metastases.<sup>1</sup>

## BREAST CANCER RESEARCH REVIEW

We offer over 50 different Reviews in various clinical areas.  
Subscription costs nothing – go to [www.researchreview.co.nz](http://www.researchreview.co.nz)





## EXPERT'S CONCLUDING COMMENTS

A number of phase III trials investigating immune checkpoint inhibitors have been published over the last few years and have provided hope in improving outcomes for patients diagnosed with advanced NSCLC.<sup>22,24,25,45</sup>

IMpower150 has demonstrated that the addition of atezolizumab, a PD-L1 inhibitor, to bevacizumab, carboplatin and paclitaxel (BCP), as first line therapy, improved median OS by 4.5 months compared with BCP alone.<sup>1</sup> Survival at 24 months was also 10% higher in the atezolizumab cohort despite nearly 40% of the BCP cohort subsequently receiving an ICI off trial.<sup>1</sup> It provides another treatment option in the first line management of non-squamous NSCLC but what differentiates those who should receive a VEGF targeted therapy in combination with an ICI and chemotherapy from those who should receive ICI and chemotherapy alone?

The median OS of 19.2 months is similar to the 20 month median OS seen in PD-L1 high patients (PD-L1 expression (TPS  $\geq$ 50%) receiving pembrolizumab monotherapy in the Keynote-042 trial.<sup>46</sup>

These results lead us to wonder if bevacizumab adds efficacy to the treatment regimen. A comparison of the ACP and ABCP arms would be helpful here and future publications of more mature data from IMpower150 are awaited. Survival data, to date, do not suggest that ICI monotherapy should be replaced as the first line treatment for PD-L1 high patients as it provides similar survival outcomes but less toxicity for patients, not only in the non-squamous setting but also in patients with squamous histology. Bevacizumab, of course, cannot be offered to patients with squamous cell carcinoma due to the high rates of pulmonary haemorrhage seen in earlier trials.<sup>6,47</sup> It will be important to see more mature survival data from the ACP arm in this trial as well as from Keynote-189 which randomised patients with advanced squamous and non-squamous NSCLC to chemotherapy + pembrolizumab or placebo.<sup>10</sup>

The improvement in median OS is also comparable to historic trials of single agent ICIs as second line therapy compared with docetaxel after treatment with a first line platinum doublet.<sup>22,24,25</sup> Is combination therapy superior to sequential therapy in this population? Will combination first line therapy allow more patients to receive and benefit from immunotherapy as median survival after first line treatment is measured in a small number of months? Will immunotherapy drug combinations be more effective than chemotherapy in combination with an immunotherapy drug? Future trials will hopefully answer these questions.

Although PFS is an approved surrogate for clinical trials it has been acknowledged that it is not a predictor of improved OS in trial populations. In previously published ICI trials,<sup>22,24,25</sup> there is either no difference in

median PFS or the difference is small, as seen in IMpower150.<sup>1</sup> The PFS rate, however, in the ABCP cohort in the ITT population was twice that of the BCP cohort at 12 months.<sup>1</sup> It remains to be seen whether it is helpful to use these endpoints going forward as they do not appear to significantly influence funding for cancer treatments in publicly funded, resource constrained medical systems such as that seen in New Zealand.

The driver mutation results in IMpower150 provide important but hypothesis producing data as the numbers of patients recruited were small and so cohorts were not adequately powered to provide practice changing survival data.<sup>1</sup> Further focused international, multicentre, clinical trials will hopefully answer the question of ICI efficacy, in both Asian and non-Asian patient populations, who have failed TKI therapy. They will have to compete with newer generations of TKI which have been engineered to target modes of resistance to earlier TKI therapy and appear to cause little toxicity.

Despite not being stratified at randomisation the populations of *Teff* high and *Teff* low were reasonably well balanced to provide data on outcomes.<sup>1</sup> It will be interesting to see if *Teff* analysis predicts for survival benefit in patients receiving atezolizumab as it appears to have little bearing on the outcomes for patients not receiving an ICI. Will *Teff* analysis also predict for survival benefit with other ICIs? Will the *Teff* gene signature provide more information for our treatment approach in combination with PD-L1 expression and tumour mutation burden analyses?

Harmonisation of biomarker analyses will be important going forward to help standardise treatment approaches. To date, individual ICIs targeting PD-1/PD-L1 have been associated with different accompanying diagnostic assays for PD-L1 expression.<sup>48,49</sup> From the Blueprint study the SP142 Ventana platform appeared to be an outlier compared with other assays.<sup>48</sup> This was the assay used to assess tumour cell (TC) and immune cell (IC) PD-L1 expression in the IMpower150 trial.<sup>1</sup> Different results may be seen with different assays. In Keynote-042, using the 22C3 Dako platform assay, 31% of the patients recruited were PD-L1 high<sup>46</sup> whereas 20% of patients in IMpower150 were PD-L1 high.<sup>1</sup>

In summary, IMpower150 has demonstrated that the addition of atezolizumab to BCP improves survival in advanced non-squamous lung cancer.<sup>1</sup> It is a first line therapy option in this population, however, the employment of bevacizumab may not be essential for efficacy and would not be first choice therapy in PD-L1 high patients (defined as PD-L1 expression on at least 50% of TC or at least 10% of tumour-infiltrating IC in IMpower150).<sup>1</sup> It will be important to await future results from this and other trials to help clarify appropriate treatment approaches that maximise efficacy and minimise toxicity in patients with advanced NSCLC.

## LUNG CANCER RESEARCH REVIEW™

We offer over 50 different Reviews in various clinical areas.  
Subscription costs nothing – go to [www.researchreview.co.nz](http://www.researchreview.co.nz)





REFERENCES

1. Socinski MA, Jotte RM, Cappuzzo F, et al. Atezolizumab for first-line treatment of metastatic nonsquamous NSCLC. *N Engl J Med*. 2018 Jun 14;378(24):2288-2301.
2. Roche Products (New Zealand) Limited. Tecentriq Data Sheet. 2019. <https://www.medsafe.govt.nz/profs/Datasheet/V/Tecentriqinf.pdf>
3. Ferlay J, Soerjomataram I, Dikshit, et al. Cancer incidence and mortality worldwide: sources, methods and major patterns in GLOBOCAN 2012. *Int J Cancer* 2015;136:E359-86.
4. Ministry of Health. 2016. Cancer: New registrations and deaths 2013. Wellington: Ministry of Health.
5. Allemani C, Weir HK, Carreira H, et al. Global surveillance of cancer survival 1995-2009: analysis of individual data for 25,676,887 patients from 279 population-based registries in 67 countries (CONCORD-2). *Lancet* 2015;385:977-1010.
6. Sandler A, Gray R, Perry MC, et al. Paclitaxel-carboplatin alone or with bevacizumab for non-small-cell lung cancer. *N Engl J Med* 2006;355:2542-50.
7. Novello S, Barlesi F, Califano R, et al. Metastatic non-small-cell lung cancer: ESMO clinical practice guidelines for diagnosis, treatment and follow-up. *Ann Oncol* 2016;27:Suppl 5:v1-v27.
8. National Comprehensive Cancer Network. NCCN clinical practice guidelines in oncology: non-small cell lung cancer. Vol. 2. 2018 ([https://www.nccn.org/professionals/physician\\_gls/PDF/nscl.pdf](https://www.nccn.org/professionals/physician_gls/PDF/nscl.pdf)).
9. Reck M, Rodríguez-Abreu D, Robinson AG, et al. Pembrolizumab versus chemotherapy for PD-L1-positive non-small-cell lung cancer. *N Engl J Med* 2016; 375:1823-33.
10. Gandhi L, Rodríguez-Abreu D, Gadgeel S, et al. Pembrolizumab plus chemotherapy in metastatic non-small-cell lung cancer. *N Engl J Med* 2018; 378: 2078-92.
11. Pardoll DM. The blockade of immune checkpoints in cancer immunotherapy. *Nat Rev Cancer*. 2012 Mar 22;12(4):252-64.
12. Luke JJ, Ott PA. PD-1 pathway inhibitors: the next generation of immunotherapy for advanced melanoma. *Oncotarget*. 2015 Feb 28;6(6):3479-92.
13. Latchman Y, Wood CR, Chernova T, et al. PD-L2 is a second ligand for PD-1 and inhibits T cell activation. *Nat Immunol* 2001;2: 261-68.
14. Dong H, Strome SE, Salomao DR, et al. Tumor-associated B7-H1 promotes T-cell apoptosis: a potential mechanism of immune evasion. *Nat Med* 2002; 8: 793-800.
15. Inman BA, Sebo TJ, Frigola X, et al. PD-L1 (B7-H1) expression by urothelial carcinoma of the bladder and BCG-induced granulomata: associations with localized stage progression. *Cancer* 2007;109: 1499-505.
16. Garon EB, Rizvi NA, Hui R, et al. Pembrolizumab for the treatment of non-small-cell lung cancer. *N Engl J Med* 2015; 372: 2018-28.
17. Robert C, Long GV, Brady B, et al. Nivolumab in previously untreated melanoma without BRAF mutation. *N Engl J Med* 2015;372: 320-30.
18. Motzer RJ, Escudier B, McDermott DF, et al. Nivolumab versus everolimus in advanced renal-cell carcinoma. *N Engl J Med* 2015;373: 1803-13.
19. Brown JA, Dorfman DM, Ma FR, et al. Blockade of programmed death-1 ligands on dendritic cells enhances T cell activation and cytokine production. *J Immunol* 2003; 170: 1257-66.
20. Chen DS, Irving BA, Hodi FS. Molecular pathways: next-generation immunotherapy--inhibiting programmed death-ligand 1 and programmed death-1. *Clin Cancer Res* 2012; 18: 6580-87.
21. Herbst RS, Soria JC, Kowanzet M, et al. Predictive correlates of response to the anti-PD-L1 antibody MPDL3280A in cancer patients. *Nature* 2014; 515: 563-67.
22. Rittmeyer A, Barlesi F, Waterkamp D, et al. Atezolizumab versus docetaxel in patients with previously treated non-small-cell lung cancer (OAK): a phase 3, open-label, multicentre randomised controlled trial. *Lancet* 2017; 389: 255-65.
23. Liu SV, Camidge DR, Gettinger SN, et al. Atezolizumab (atezo) plus platinum based chemotherapy (chemo) in non-small cell lung cancer (NSCLC): update from a phase Ib study. *J Clin Oncol* 2017; 35: Suppl 15: 9092. abstract.
24. Borghaei H, Paz-Ares L, Horn L, et al. Nivolumab versus docetaxel in advanced nonsquamous non-small-cell lung cancer. *N Engl J Med* 2015; 373: 1627-39.
25. Herbst RS, Baas P, Kim DW, et al. Pembrolizumab versus docetaxel for previously treated, PD-L1-positive, advanced non-small-cell lung cancer (KEYNOTE-010): a randomised controlled trial. *Lancet* 2016; 387: 1540-50.
26. Hicklin DJ, Ellis LM. Role of the vascular endothelial growth factor pathway in tumor growth and angiogenesis. *J Clin Oncol*. 2005;23:1011-1027.
27. Kim JM, Chen DS. Immune escape to PD-L1/PD-1 blockade: seven steps to success (or failure). *Ann Oncol* 2016; 27: 1492-504.
28. Terme M, Colussi O, Marcheteau E, et al. Modulation of immunity by antiangiogenic molecules in cancer. *Clin Dev Immunol*. 2012;2012:492920.
29. Oyama T, Ran S, Ishida T, et al. Vascular endothelial growth factor affects dendritic cell maturation through the inhibition of nuclear factor-kappa B activation in hemopoietic progenitor cells. *J Immunol* 1998; 160: 1224-32.
30. Goel S, Duda DG, Xu L, et al. Normalization of the vasculature for treatment of cancer and other diseases. *Physiol Rev* 2011; 91: 1071-121.
31. Motz GT, Santoro SP, Wang LP, et al. Tumor endothelium FasL establishes a selective immune barrier promoting tolerance in tumors. *Nat Med* 2014; 20: 607-15.
32. Hodi FS, Lawrence D, Lezcano C, et al. Bevacizumab plus ipilimumab in patients with metastatic melanoma. *Cancer Immunol Res* 2014; 2: 632-42.
33. Wallin J, Bendell JC, Funke R, et al. Atezolizumab in combination with bevacizumab enhances antigen-specific T-cell migration in metastatic renal cell carcinoma. *Nat Commun* 2016; 7: 12624.
34. Roland CL, Lynn KD, Toombs JE, et al. Cytokine levels correlate with immune cell infiltration after anti-VEGF therapy in preclinical mouse models of breast cancer. *PLoS One* 2009; 4(11): e7669.
35. Facciabene A, Peng X, Hagemann IS, et al. Tumour hypoxia promotes tolerance and angiogenesis via CCL28 and T(reg) cells. *Nature* 2011; 475: 226-30.
36. Voron T, Colussi O, Marcheteau E, et al. VEGF-A modulates expression of inhibitory checkpoints on CD8+ T cells in tumors. *J Exp Med* 2015; 212: 139-48.
37. Yang J, Yan J, Liu B. Targeting VEGF/VEGFR to Modulate Antitumor Immunity. *Front Immunol*. 2018 May 3;9:978.
38. Peters S, Gettinger S, Johnson ML, et al. Phase II trial of atezolizumab as firstline or subsequent therapy for patients with programmed death-ligand 1-selected advanced non-small-cell lung cancer (BIRCH). *J Clin Oncol* 2017; 35: 2781-9.
39. Gadgeel S, Kowanetz M, Zou W, et al. Clinical efficacy of atezolizumab (atezo) in PD-L1 subgroups defined by SP142 and 22C3 IHC assays in 2L+ NSCLC: results from the randomized OAK study. *Ann Oncol* 2017; 28: Suppl 5: 460-1. abstract.
40. Pillai RN, Kamphorst AO, Owonikoko TK, et al. Liver metastases and sensitivity to checkpoint inhibition in patients with non-small cell lung cancer (NSCLC). *J Clin Oncol* 2016; 34(15): Suppl: e20665.
41. Tumeq PC, Hellmann MD, Hamid O, et al. Liver metastasis and treatment outcome with anti-PD-1 monoclonal antibody in patients with melanoma and NSCLC. *Cancer Immunol Res* 2017; 5: 417-24.
42. Paz-Ares LG, Shen K, Higgs BW, et al. Association of liver metastases (LM) with survival in NSCLC patients treated with durvalumab (D) in two independent clinical trials. *J Clin Oncol* 2017; 35(15): Suppl:3038.
43. Reck M, Mok TSK, Nishio M, et al. Atezolizumab plus bevacizumab and chemotherapy in non-small-cell lung cancer (IMpower150): key subgroup analyses of patients with EGFR mutations or baseline liver metastases in a randomised, open-label phase 3 trial. *Lancet Respir Med*. 2019 May;7(5):387-401.
44. Reck M, Wehler T, Orlandi F, et al. IMpower150: Clinical safety, tolerability and immune-related adverse events in a phase III study of atezolizumab (atezo) + chemotherapy (chemo) ± bevacizumab (bev) vs chemo + bev in 1L non-squamous NSCLC *Annals of Oncology* (2018) 29 (suppl\_8): viii493-viii547. 10.1093/annonc/mdy292.
45. Brahmer J, et al. Nivolumab versus Docetaxel in Advanced Squamous-Cell Non-Small-Cell Lung Cancer. *N Engl J Med*. 2015;373:123-35.
46. Mok TSK, Wu YL, Kudaba I, et al. Pembrolizumab versus chemotherapy for previously untreated, PD-L1-expressing, locally advanced or metastatic non-small-cell lung cancer (KEYNOTE-042): a randomised, open-label, controlled, phase 3 trial. *Lancet*. 2019 May 4;393(10183):1819-1830.
47. Johnson DH, et al. Randomized phase II trial comparing bevacizumab plus carboplatin and paclitaxel with carboplatin and paclitaxel alone in previously untreated locally advanced or metastatic non-small-cell lung cancer. *J Clin Oncol* 2004;22:2184-91.
48. Hirsch FR, et al. PD-L1 Immunohistochemistry Assays for Lung Cancer: Results from Phase 1 of the Blueprint PD-L1 IHC Assay Comparison Project. *J Thorac Oncol*. 2017;12:208-22.
49. Chakravarti N, et al. Predictive factors of activity of anti-programmed death-1/programmed death ligand-1 drugs: immunohistochemistry analysis. *Transl Lung Cancer Res*. 2015;4:743-51.

**Tecentriq® (atezolizumab) Abridged Prescribing Information**

Tecentriq (atezolizumab, 1200 mg/20mL concentrate for solution for infusion) is a **Prescription Medicine** for the treatment of the following: **Non-small cell lung cancer** Tecentriq, in combination with bevacizumab, paclitaxel and carboplatin is indicated for the first-line treatment of patients with metastatic non-squamous non-small cell lung cancer (NSCLC). In patients with EGFR mutant or ALK-positive NSCLC, Tecentriq, in combination with bevacizumab, paclitaxel and carboplatin, is indicated only after failure of appropriate targeted therapies. Tecentriq is indicated for the treatment of adult patients with locally advanced or metastatic NSCLC after prior chemotherapy. **Small cell lung cancer** Tecentriq, in combination with carboplatin and etoposide is indicated for the first-line treatment of patients with extensive-stage small cell lung cancer (ES-SCLC). **Urothelial carcinoma** Tecentriq is indicated for the treatment of adult patients with locally advanced or metastatic urothelial carcinoma who are considered cisplatin-ineligible and whose tumours have a PD-L1 expression  $\geq$  5%, or who are considered ineligible for any other platinum-containing chemotherapy regardless of level of tumour PD-L1 expression, or have disease progression during or following platinum-containing chemotherapy, or have disease progression within 12 months of neoadjuvant or adjuvant treatment with platinum-containing chemotherapy. **Triple-negative breast cancer** Tecentriq, in combination with nab-paclitaxel, is indicated for the treatment of patients with unresectable locally advanced or metastatic triple-negative breast cancer (TNBC) whose tumours have PD-L1 expression  $\geq$  1%, and who have not received prior chemotherapy for metastatic disease. **Dose and Method of Administration:** Please refer to the Tecentriq Data Sheet for information. **Contraindications:** Hypersensitivity to atezolizumab or to any excipient. **Special warnings and precautions for use:** Tecentriq is associated with immune-related reactions. Based on severity, Tecentriq should be withheld and corticosteroids administered. In general, Tecentriq must be permanently discontinued for any recurrent Grade 3 or Grade 4 immune-related reaction. Refer to Data Sheet for specific monitoring and management recommendations for the following immune-related reactions: pneumonitis, hepatitis, colitis, endocrinopathies, meningoencephalitis, neuropathies, pancreatitis, myocarditis, myositis and nephritis. **Infusion-related reactions (IRRs):** Reduce infusion rate or interrupt infusion for grade 1 or 2 IRRs. Tecentriq may be continued with close monitoring; consider premedication with antipyretic and antihistamines. Permanently discontinue treatment for grade 3 or 4 IRRs. **Patients with autoimmune disease:** Patients with autoimmune disease were excluded from clinical trials; use with caution after assessment of the potential risk versus benefit. **Renal impairment:** No dose adjustment required. **Hepatic impairment:** No dose adjustment required for mild impairment. No data in moderate or severe impairment. **Use in the elderly:** No overall differences in safety or efficacy were observed between patients  $\geq$  65 years of age and those < 65 years. **Use in pregnancy – Category D:** Tecentriq poses a risk to the human foetus, including embryo lethality. Pregnant women should be advised of the potential risk to the foetus. Women of childbearing potential should use highly effective contraception during treatment and for at least 5 months after the last dose. Safety during labour and delivery has Tecentriq 190527 2 not been established. **Breastfeeding:** Either discontinue breastfeeding or discontinue Tecentriq. **Fertility:** Tecentriq may impair fertility in females of reproductive potential while receiving treatment. **Undesirable effects:** See Data Sheet for full list. Fatal cases of pneumonitis and hepatitis have been observed. **Blood and lymphatic system:** anaemia; thrombocytopenia; neutropenia, lymphocyte count decreased. **Cardiac disorders:** myocarditis. **Endocrine:** hypothyroidism; hyperthyroidism; adrenal insufficiency; hypophysitis; diabetes mellitus. **Gastrointestinal:** constipation; stomatitis; diarrhoea; dysphagia; colitis; nausea; vomiting; abdominal pain; pancreatitis; oropharyngeal pain. **General:** chills; fatigue; asthenia; influenza-like illness; pyrexia; infusion-related reactions; headache. **Hepatobiliary:** ALT increased; AST increased; hepatitis. **Immune system:** hypersensitivity. **Infections and Infestations:** urinary tract infection; lung infection. **Metabolism and nutrition:** decreased appetite; hypokalaemia; hyponatraemia; hyperglycaemia, hypomagnesaemia. **Musculoskeletal and connective tissue:** arthralgia; back pain; musculoskeletal pain, myositis. **Nervous system:** Guillain-Barré syndrome; meningoenephalitis; dizziness; dysgeusia; peripheral neuropathy; syncope. **Renal and Urinary:** nephritis; proteinuria. **Respiratory, thoracic and mediastinal:** cough; dyspnoea; hypoxia; nasal congestion; pneumonitis (including bronchiolitis, interstitial lung disease); nasopharyngitis. **Skin and subcutaneous tissue:** pruritus; rash **Vascular:** hypotension.

**Tecentriq is not a PHARMAC-funded medicine.**

Before prescribing, please review the Tecentriq Data Sheet available at [www.medsafe.govt.nz](http://www.medsafe.govt.nz). Roche Products (New Zealand) Limited, Auckland. Ph 0800 276 243. [www.roche.co.nz](http://www.roche.co.nz)  
All trademarks mentioned herein are protected by law.



This publication has been created with an educational grant from Roche. The content is entirely independent and based on published studies and the author's opinions. It may not reflect the views of Roche. Please consult the full Data Sheets at [www.medsafe.govt.nz](http://www.medsafe.govt.nz) before prescribing. Treatment decisions based on these data are the full responsibility of the prescribing physician.